

VPN Connection Setting Procedure (WindowsOS)

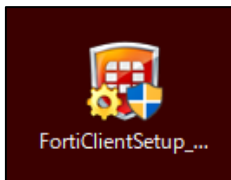
- ◆ Please be sure to download the FortiClient installer from R-CCS-Net portal site.
- ◆ Pictures on this document are the screen of Windows10.
- ◆ VPN connection requires installation of client certificate and intermediate certificate.
- ◆ If you are connecting to VPN for the first time, please follow the steps 1 to 4 below.
- ◆ If you are already using VPN, please refer to the necessary steps in the following 3 to 5 steps.

■ Table of contents (Link to each procedure)

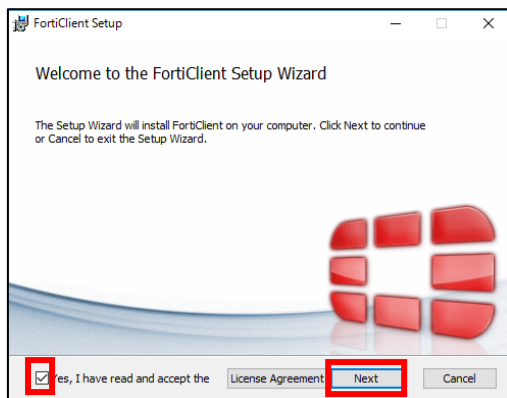
1. [VPN Tool Installation Procedure](#)
2. [VPN new setting procedure](#)
3. [VPN Connection Procedure](#)
4. [DNS Suffix Configuration Procedure](#)
5. [Change VPN setting procedure](#)

■ VPN Tool (FortiClient) Installation Procedure

1. Save a VPN Tool “FortiClient”, which you download from R-CCS-Net portal site - The Use of VPN Service ([Internal Portal Site](#) or [External Portal Site](#)), to any location on your device, and then double-click on it.

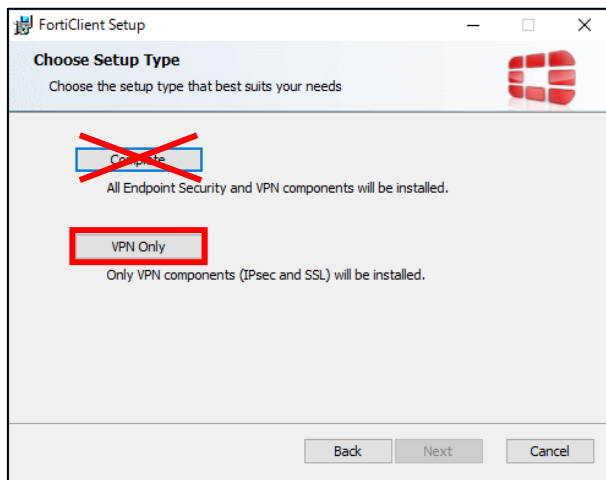


2. When the popup about “SmartScreen” is displayed, please click “Run”.
3. When the FortiClient Setup Wizard screen opens, check the box for “Yes, I have read and accept the License Agreement”, and then click on [Next].

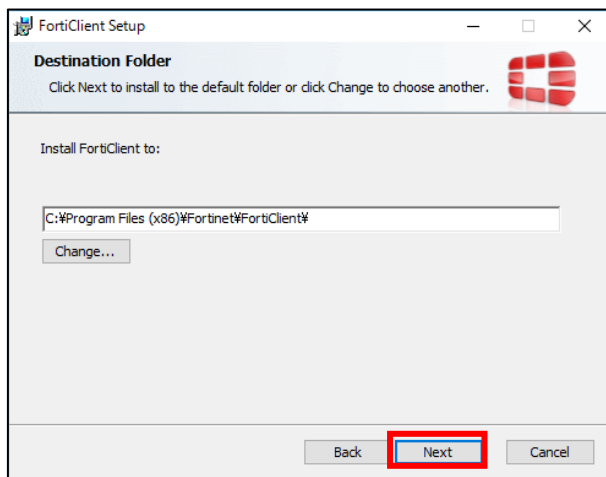


- Click on [VPN Only] on the Choose Setup Type screen.

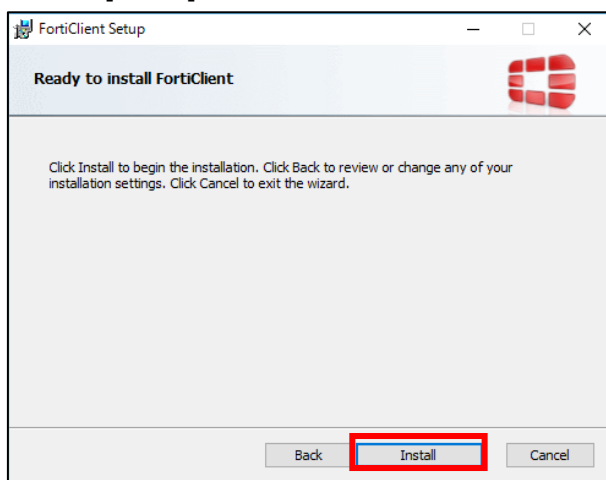
*“Endpoint Security” of “Complete” is not available because of no license in R-CCS-Net.



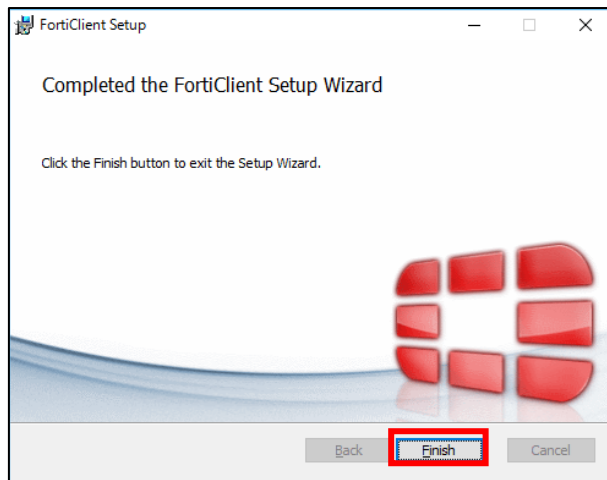
- Click on [Next] on the Destination Folder screen.



- Click on [Install].



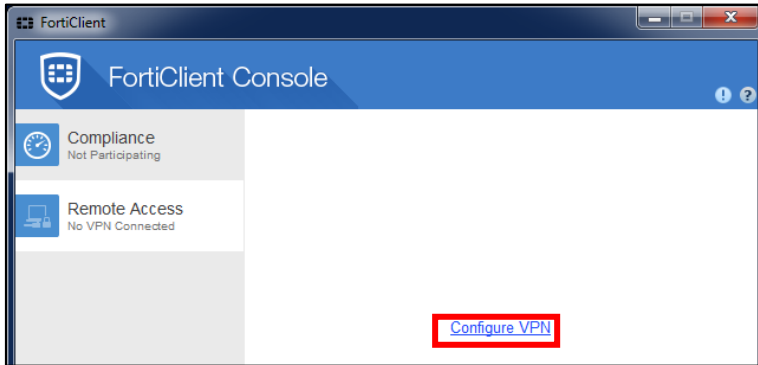
7. Click on [Finish].



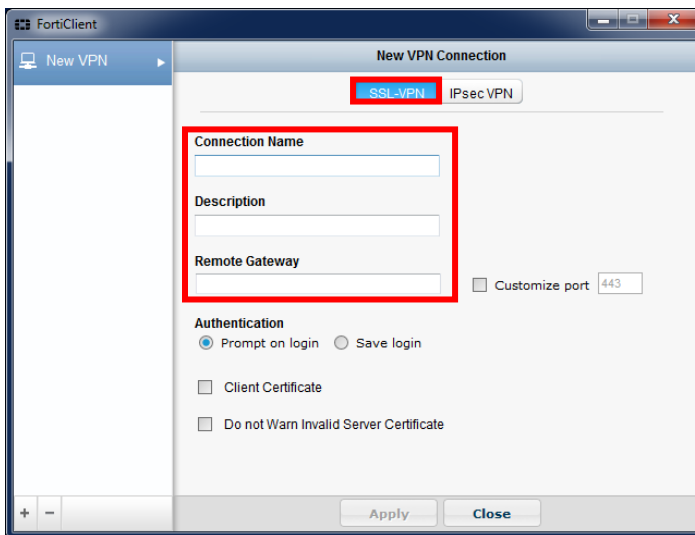
That's the end of installation procedure.

■ VPN new setting procedure

1. Startup "FortiClient Console" by click "FortiClient" from "All Programs".
2. Click on [Configure VPN] in "FortiClient Console".

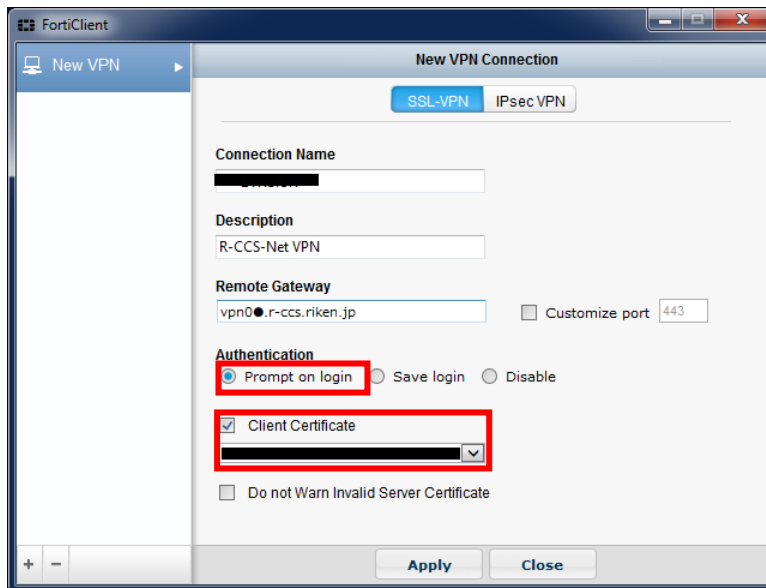


3. Click on [SSL-VPN] tab in "New VPN Connection". Then, fill "Connection Name", "Description" and "Remote Gateway" while referring to following table.



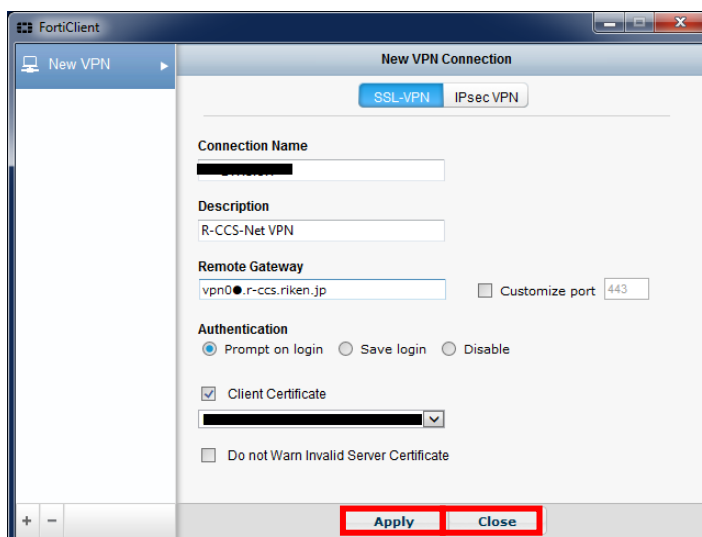
Network to use	Connection Name	Description	Remote Gateway
Administration Division	AdministrationDiv	R-CCS-Net VPN	vpn01.r-ccs.riken.jp
Research Team	ResearchTeam		vpn02.r-ccs.riken.jp
FS2020	FS2020		vpn03.r-ccs.riken.jp
Operations and Computer Technologies Division	OperationsDiv		vpn04.r-ccs.riken.jp

- Set "Prompt on login" and check the "Client Certificate". Then choose your certificate from pull down.



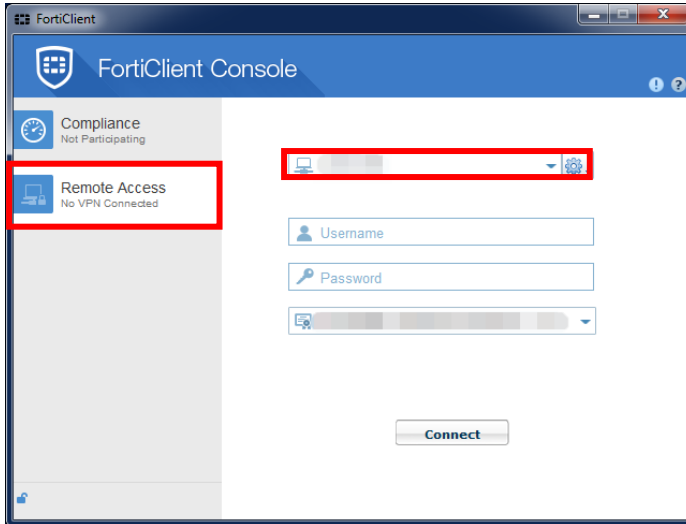
Network to use	Certificate *yyyy...issued year
Administration Division	r●●●●●●●-1214-yyyy
Research Team	r●●●●●●●-1237-yyyy
FS2020	r●●●●●●●-1234-yyyy
Operations and Computer Technologies Division	r●●●●●●●-1216-yyyy

- Click on [Apply] and [Close]. That's the end of configure procedure.



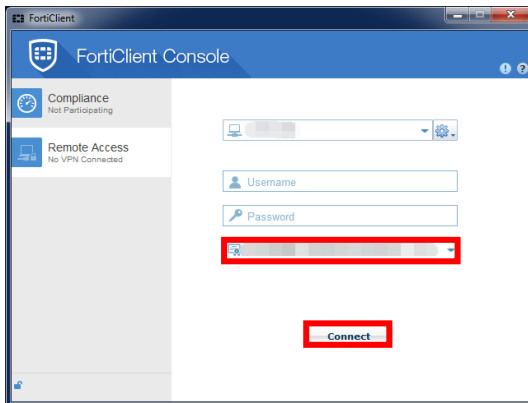
■ VPN Connection Procedure

1. Startup "FortiClient Console" by click on "FortiClient" from "All Programs".
2. Click on [Remote Access] and choose the connection destination from pull down.



3. Choose the certificate of the connection destination from pull down. Then click on [Connect]. Click on [Connect] to connect to VPN. If you have client certifications, you can select the client certificate by clicking on the pull down.

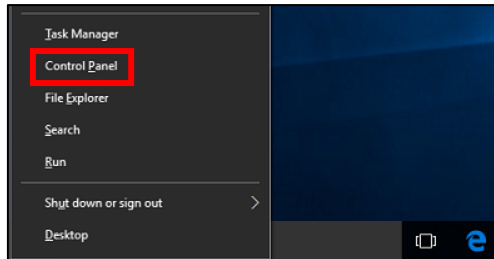
* Username and Password are not needed to fill.



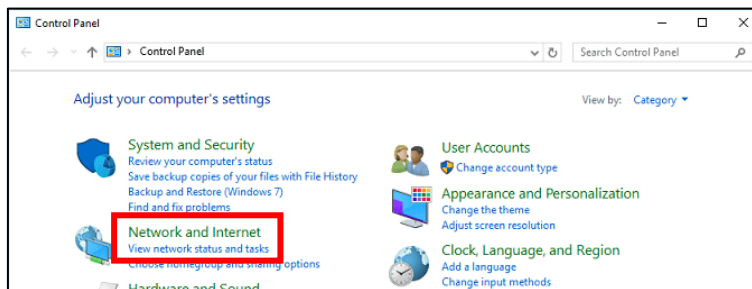
That's the end of connection procedure.

■ DNS Suffix Configuration Procedure

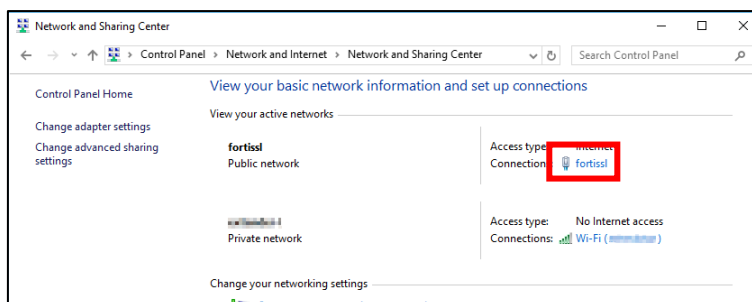
1. After VPN connection, hold down the windows key and click on the x key, and click on [Control Panel].



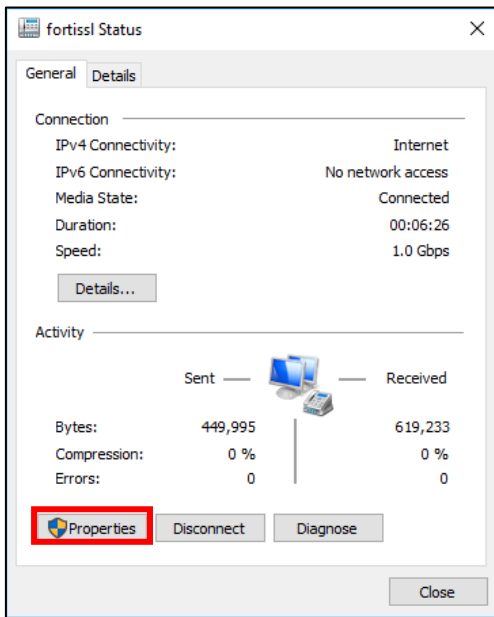
2. Click on [View network status and tasks].
※If the view type is "icons", click on [Network and Sharing Center].



3. Click on [fortissl].
* The display may differ depending on the device, such as [Ethernet 3] and [Ethernet 4].

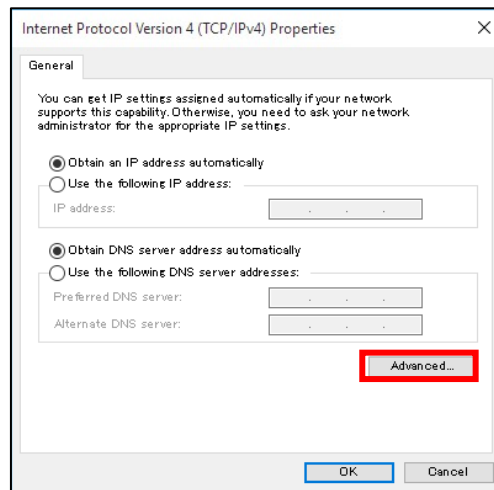
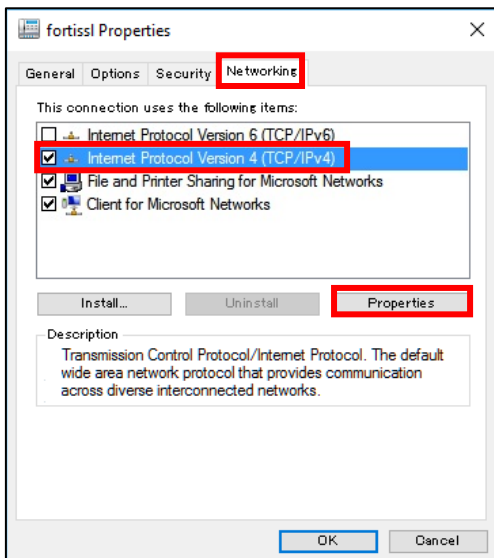


4. Click on [Properties].

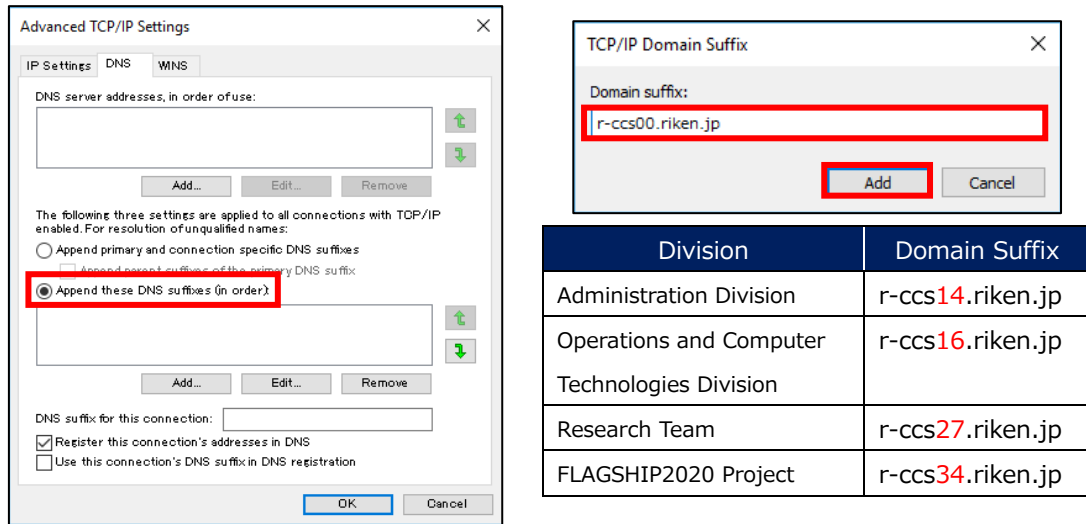


5. Select [Networking] tab on "fortissl Properties" screen, select "Internet Protocol Version 4 (TCP/IPv4)" and then click on [Properties]. Click on [Advanced] on "Internet Protocol Version 4 (TCP/IPv4) Properties" screen.

* When displaying properties such as [Ethernet 3] or [Ethernet 4], there is no problem if "Connect Using: Fortinet SSL VPN Virtual Ethernet Adapter" is displayed when selecting the [Networking] tab.



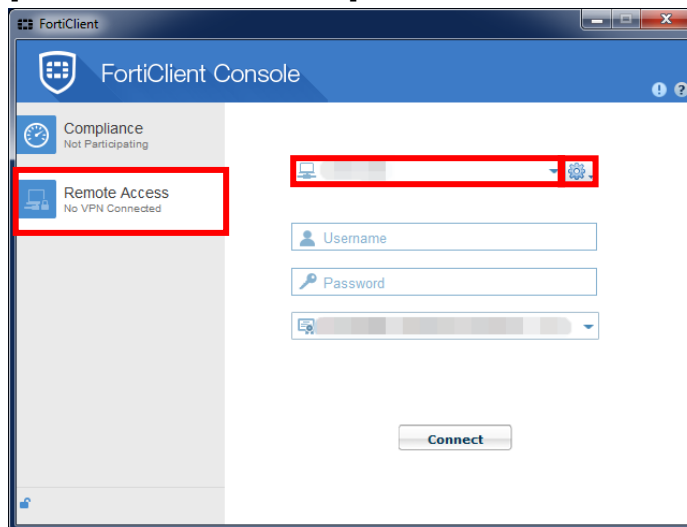
6. Select [DNS] tab on “Advanced TCP/IP Settings” screen, select “Append these DNS suffixes (in order)” and click on [Add]. Enter the domain suffix on the “TCP/IP Domain Suffix” dialog, and then click on [Add] to close the dialog. Please click on [OK] and [close] to close the all window thereafter.



That's the end of DNS suffix configuration procedure.

■ Change setting procedure

1. Startup "FortiClient Console" by click "FortiClient" from "All Programs".
2. Click on [Remote Access], select the change connection, and click on gear and then choose [Edit the selected connection].



3. Change setting, then click [Apply].

That's the end of change setting procedure.