

## VPN Connection Setting Procedure (LinuxOS)

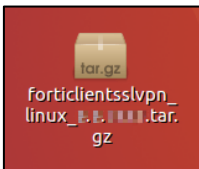
- ◆ Pictures on this document are the screen of Ubuntu 16.x.
- ◆ VPN connection requires a client certificate and an intermediate certificate.

### ■ [Table of contents \(Link to each procedure\)](#)

1. [VPN Setting and Connection Procedure](#)
2. [DNS Suffix Configuration Procedure](#)

### ■ [VPN Setting and Connection Procedure](#)

1. Save a compressed file of VPN Tool “FortiClient”, which you download from R-CCS-Net portal site - The Use of VPN Service ([Internal Portal Site](#) or [External Portal Site](#)), to any location on your device.



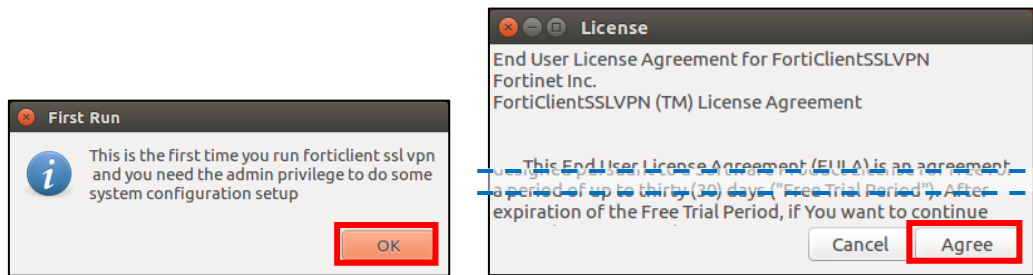
2. Open the terminal and enter the following command to decompress the file.

```
$ tar -zxvf forticlientsslvpn_linux_0.0.0000.tar.gz
```

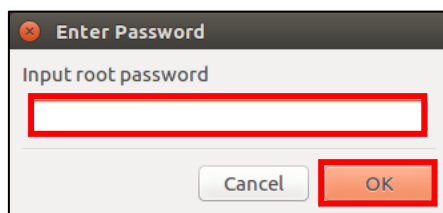
3. Click on [VPN Only] on the Choose Setup Type screen.

```
$ cd forticlientsslvpn/  
$ ls  
32bit 64bit fortisslvpn.sh  
$ ./fortisslvpn.sh
```

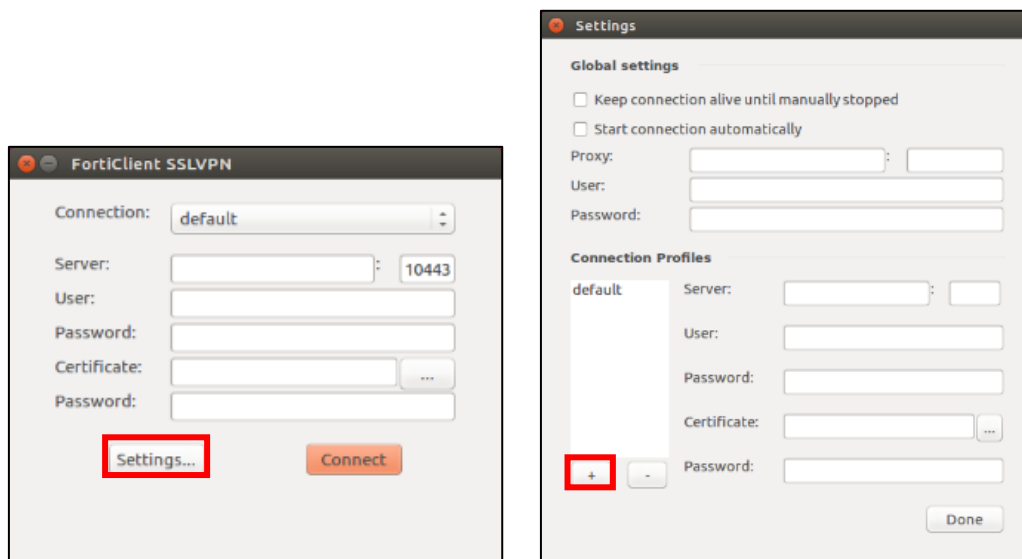
- Click on [OK] on “First Run” dialog, confirm the license agreement and then click on [Agree].



- Enter the root password and click on [OK].



- Click on [Settings...] on “FortiClient SSLVPN” screen, and then click on [+] on “Setting” screen.



7. Enter the contents on “New connection” screen in reference to the below and click on [Create].

Input item	Entry
①Connection	See table below.
②Server	See table below.
③Port	443
④User	(blank)
⑤Password	(blank)
⑥Certificate	Specify certificate.
⑦Password	Password of ⑥.

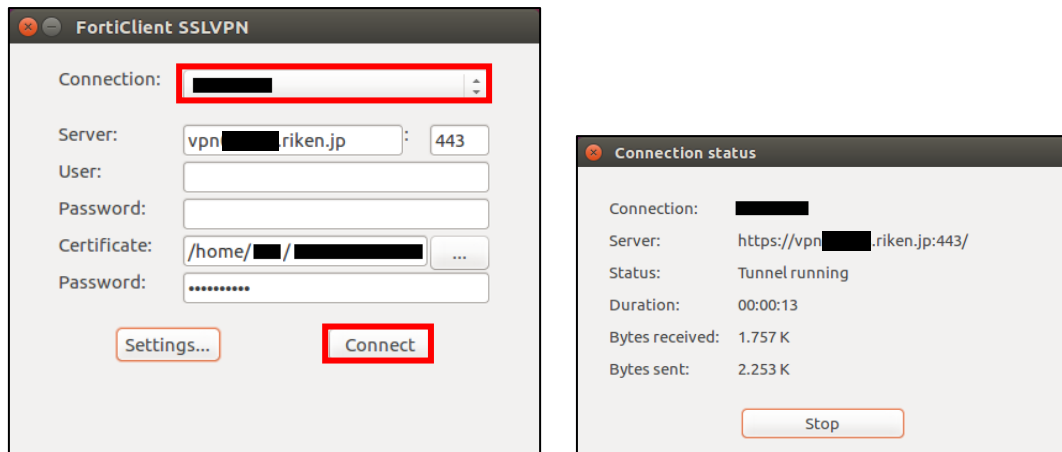
**<The divisional settings>** ※Enter the half-size alphanumeric characters.

	Connection (※)	Server	Certificate *yyyy...issued year
Administration	AdministrationDiv	vpn01.r-ccs.riken.jp	r000000-1214-yyyy.p12
Research	ResearchTeam	vpn02.r-ccs.riken.jp	r000000-1237-yyyy.p12
FS2020	FS2020	vpn03.r-ccs.riken.jp	r000000-1234-yyyy.p12
Operations	OperationsDiv	vpn04.r-ccs.riken.jp	r000000-1216-yyyy.p12

8. Select the connection you created by procedure#7, check the checkbox of “Keep connection alive until manually stopped” and click on [Done].

9. Confirm that the connection you created by procedure#7 is selected, click on [Connect]. "Tunnel running" on "Connection status" screen shows a successful connection. If you would like to disconnect VPN connection, click on [Stop].

If you have client certifications, you can select the client certificate by creating the connection with each certificate in reference to the procedure#7.



That's the end of connection procedure.

## ■ DNS Suffix Configuration Procedure

1. Open the terminal and enter the following command to open the config file.

```
$ sudo vi /etc/resolvconf/resolv.conf.d/base
```

2. Enter "Domain Suffix" and "DNS Server's Address" and save the file.

Sample
search <b>r-ccs00.riken.jp</b>
nameserver <b>172.19.240.9</b>

- search **<Domain Suffix>**
- nameserver **<DNS Server's Address>**

Division	Domain Suffix
Administration Division	r-ccs <b>14</b> .riken.jp
Operations and Computer Technologies Division	r-ccs <b>16</b> .riken.jp
Research Team	r-ccs <b>27</b> .riken.jp
FLAGSHIP2020 Project	r-ccs <b>34</b> .riken.jp

3. Enter the following command to update the file.

```
$ sudo resolvconf -u
```

That's the end of DNS suffix configuration procedure.